

Patens básicos / Estilos varios

Hola amigos de drumsweb!!! En primer lugar quiero agradecer a todos aquello que me han escrito a mi correo o nos conectamos por msn Aca les dejo la escritura en pentagrama que utilizo generalmente...

A musical notation for a 4/4 drum pattern. The staff is a five-line pentagram. The time signature is 4/4. The pattern consists of the following beats: Beat 1: BOMBO (bottom line), HI-HAT PIE (cross on the first space). Beat 2: CENCERRO PIE (black square on the first space), TAMBOR (top line). Beat 3: TOMS 1 (top line), TOMS 2 (top line). Beat 4: TOMS 3 (top line), HI-HAT (cross on the first space), RIDE (cross on the first space), CRASH (cross on the first space).

Este material que quisiera compartir con ustedes ,es el resultado de varios años de docencia, donde el alumno ingresa con la ilusión de tocar el instrumento siguiendo los pasos de un baterista de grupo popular y la obligación nuestra es enseñarles un poco de todo para poder guiarlo en la búsqueda de su propio estilo.....

Por ese motivo acá les presento unas bases estándar de géneros populares para los principiantes.....

Base de blues

Musical notation for a blues drum pattern. The title is "BLUES". The tempo is marked as "♩ = 60". The time signature is 6/8. The notation shows a series of eighth notes on the bottom line, with eighth rests on the first space. Above the staff, there are eighth notes with 'x' marks, indicating cymbal or hi-hat patterns.

Base Folclore Arg.

Musical notation for a folk drum pattern. The title is "CHACARERA/FOLCLORE ARG.". The tempo is marked as "♩ = 110". The time signature is 3/4. The notation shows a series of eighth notes on the bottom line, with eighth rests on the first space. Above the staff, there are eighth notes with 'x' marks, indicating cymbal or hi-hat patterns.

Base de Heavy

HEAVY
♩ = 100

Musical notation for Heavy base, featuring a 4/4 time signature and a tempo of 100. The notation consists of a single staff with a treble clef and a key signature of one flat. The melody is composed of quarter notes, and the bass line is a simple, steady eighth-note pattern. The piece concludes with a double bar line and repeat dots.

Base estándar de jazz

JAZZ
♩ = 60

Musical notation for Standard Jazz base, featuring a 4/4 time signature and a tempo of 60. The notation consists of a single staff with a treble clef and a key signature of one flat. The melody is composed of quarter notes, and the bass line is a simple, steady eighth-note pattern. The piece concludes with a double bar line and repeat dots.

Base 1 Punk

PUNK
♩ = 144

Musical notation for Punk base 1, featuring a 4/4 time signature and a tempo of 144. The notation consists of a single staff with a treble clef and a key signature of one flat. The melody is composed of quarter notes, and the bass line is a simple, steady eighth-note pattern. The piece concludes with a double bar line and repeat dots.

Base 2 Punk

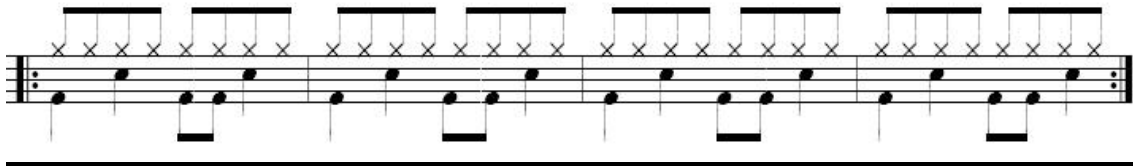
Musical notation for Punk base 2, featuring a 4/4 time signature. The notation consists of a single staff with a treble clef and a key signature of one flat. The melody is composed of quarter notes, and the bass line is a simple, steady eighth-note pattern. The piece concludes with a double bar line and repeat dots.

Base 1 rock

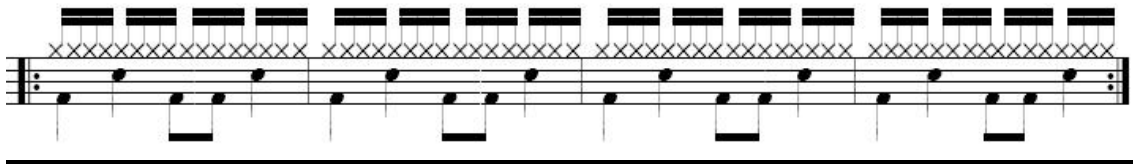
ROCK
♩ = 100

Musical notation for Rock base 1, featuring a 4/4 time signature and a tempo of 100. The notation consists of a single staff with a treble clef and a key signature of one flat. The melody is composed of quarter notes, and the bass line is a simple, steady eighth-note pattern. The piece concludes with a double bar line and repeat dots.

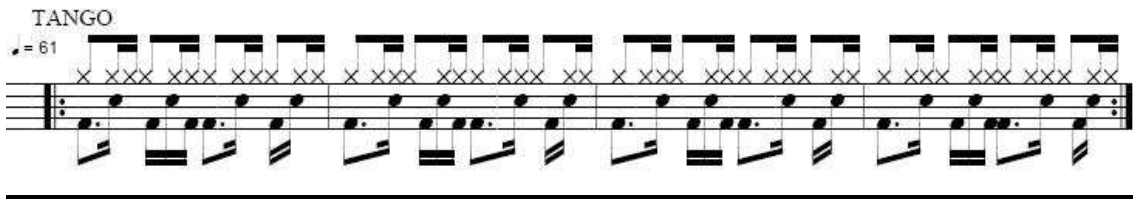
Base 2 Rock



Base 3 Rock



Base 1 Tango



Bueno amigos, espero que les sirva de ayuda para poder tocar con su bandita del barrio y tener noción de algunos géneros...

Cualquier inquietud escriban o véanme en el msn

negro_roth@hotmail.com

Un abrazo grande ¡!!

Negro Roth